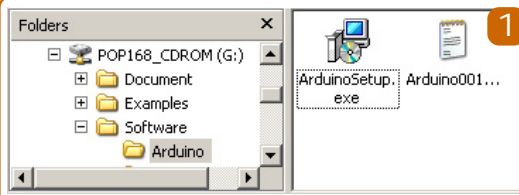




# Quick start guide to POP Builder Kit

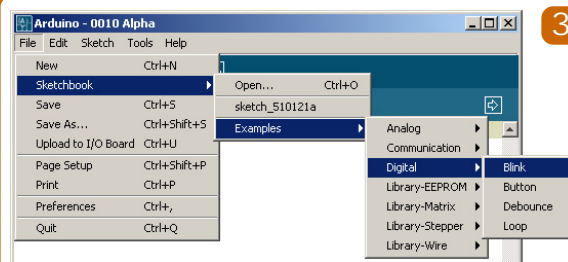
## Introduction to POP-Builder Kit with Arduino software



Setup Arduino software by browse folder "Software\Arduino" on CDROM, call and follow on installation procedure.



After install, Arduino software group was added. Run "Arduino" to start program (may take time for first JAVA Runtime called). If your machine has previous JAVA Runtime installed, call "Arduino (JAVA Console)" to run instead.



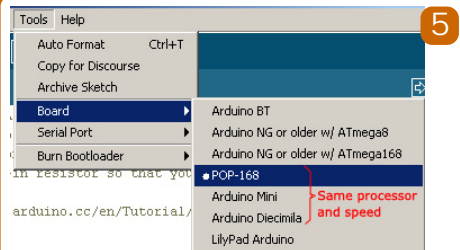
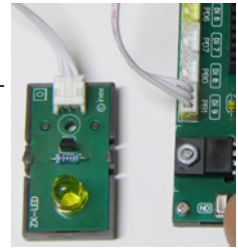
On example sketch, LED Blink for test.

select menu: **Sketchbook** → **Examples** → **Digital** → **Blink**

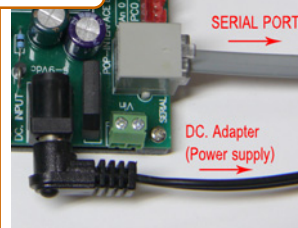
On editor, modify value on program at line

**"int ledPin=13;"**  
from **13 to 9**, then connect **ZX-LED** to "D1 9"

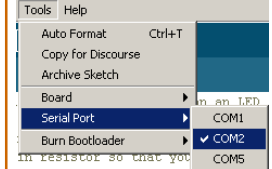
```
int ledPin = 9;
```



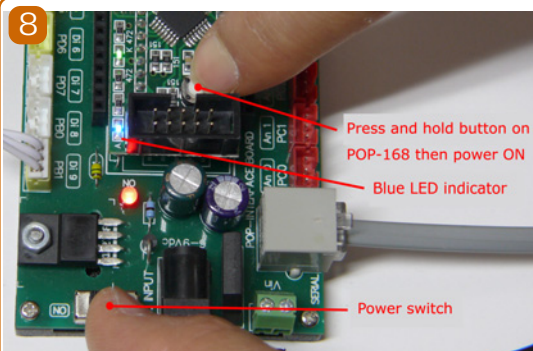
Back to select Board on menu : **Tools** → **Board**  
select type as **POP-168, Arduino Mini, Diecimila**



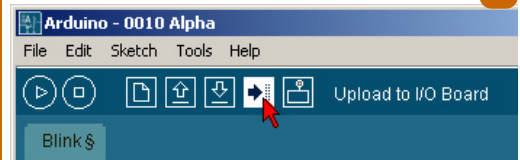
Connect CX-4 download cable to PC's serial port (COM) and plug DC. power supply to board



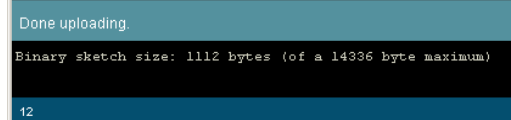
Choose Serial Port name on Arduino as CX-4 cable connected by menu:  
**Tools** → **Serial Port**



Upload procedure: hold the "White" button on POP-168 module then turn power switch "ON". Blue LED should be full bright indicate POP-168 has enter bootloader mode.



Click "Upload to I/O Board" button on toolbar to start upload then wait for a few seconds, bottom window (status) will be shown "Done uploading" if success.



Finally, press "RESET" button on board and see LED on ZX-LED blinking as uploaded program.